

Non-Binding LNG Request Sheet

advanceLNG Project

Requester Information

Company: _____
Contact: _____
Title: _____
Address: _____
Telephone: _____
Email: _____

LNG Pricing and Volume

Please specify below:

Ratable Delivery, check months during which delivery is requested (e.g., Jan.-March)

Jan. Feb. Mar. Apr. May June

July Aug. Sept. Oct. Nov. Dec.

Contract Term (years): _____

Contract Commencement Date: _____

Annual Delivery Quantity: _____

Price: _____

Project Pricing is PGW Commodity WACOG (or LNG tank price) + Sales Service Charge + Liquefaction and Truck Loading Fee

The indicative pricing is based on the following assumptions. Requested deviations from these terms may result in different pricing than indicated above.

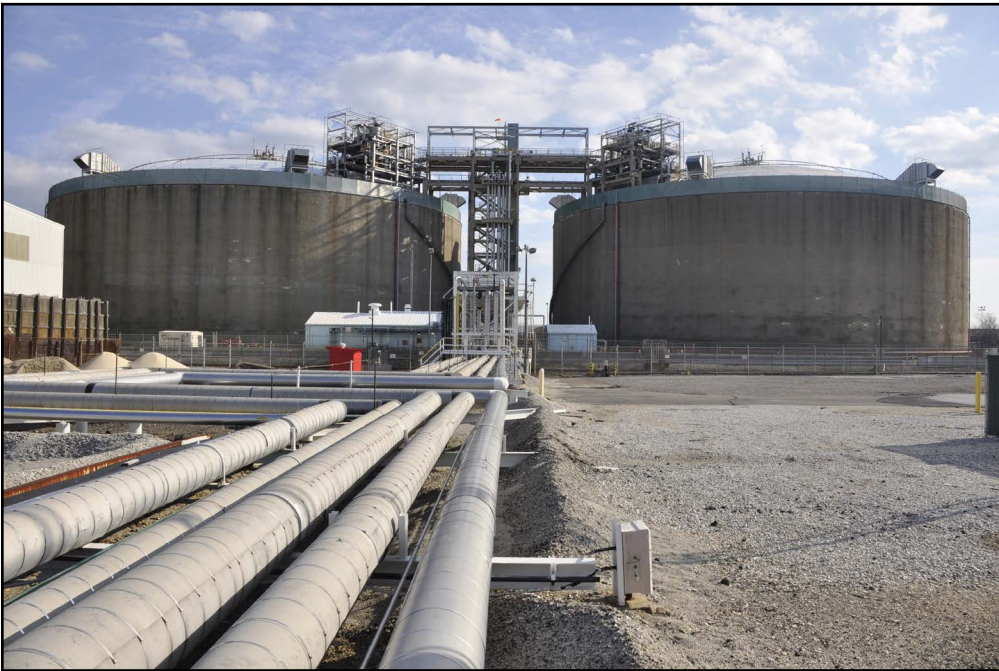
- **FOB Plant Service**
- **Potential Contract Commencement Date of 4th Quarter of 2017**
- **Term Minimum of 5 Years**

Additional Comments or Requests:

Email your completed Request Sheet to PGW.LNG@pgworks.com

advanceLNG Project

Seeking Non-Binding Proposals to Purchase LNG Supply



COMPANY DESCRIPTION/LNG HISTORY

PGW is the largest municipally-owned gas utility in the nation, serving the City of Philadelphia and its approximately 1.5 million residents.

PGW currently owns, operates and maintains a distribution system of approximately 3,030 miles of gas mains. PGW operates one facility for the liquefaction, storage and vaporization of natural gas as well as a second satellite facility for storage and vaporization of LNG. These facilities have a combined LNG storage capacity of approximately 4.3 Bcf and the ability to liquefy up to 16,000 Mcf per day or about 1.5 - 2.0 Bcf/year. Gas supply arrives directly from interstate pipelines.

PROJECT DESCRIPTION

PGW is considering the expansion of its liquefaction capabilities. PGW's interest in building this increased liquefaction will be dependent on a review of potential LNG demand in the northeast United States, including both historical and emerging demand for natural gas. In order to help determine this potential LNG demand, PGW is inviting potential buyers to submit non-binding requests to purchase LNG. Commercial operation for this project is targeted for the last quarter of 2017. LNG will be available to be loaded into buyer-provided trucks at PGW's truck loading racks located at:

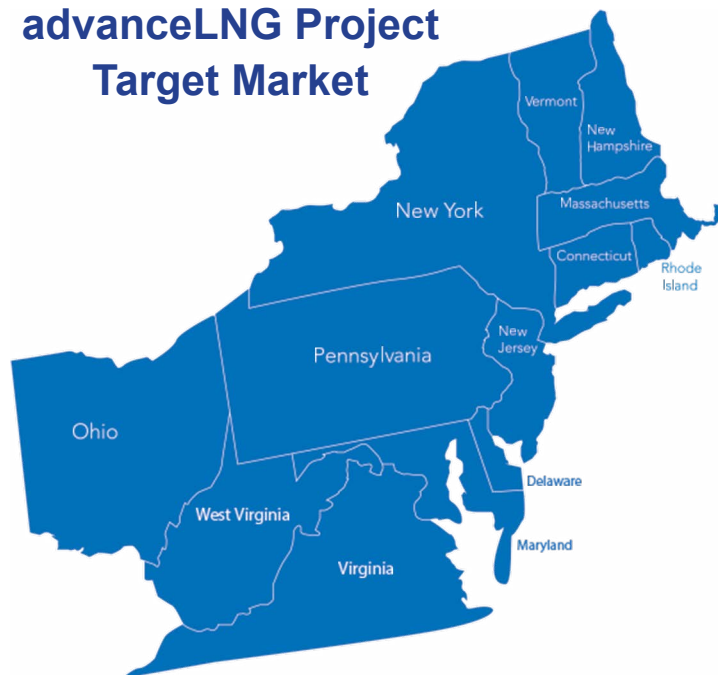
*PGW Richmond Plant
3100 E. Venango Street
Philadelphia PA 19134*

LNG PRICE

Buyers of PGW LNG currently purchase LNG at a price equal to: (i) Monthly PGW Weighted Average Cost of Gas (WACOG) (or LNG tank price, depending upon the circumstances) + (ii) Sales Service Charge (SSC) (which is the cost of PGW pipeline and storage assets to ensure deliverability to PGW delivery points) + (iii) Liquefaction and Truck Loading Fee.

A history of the Monthly WACOG and SSC are attached. The Liquefaction and Truck Loading Fee ("L&TLF") will be a negotiated rate which will be based on many factors, including, but not limited to, the project cost and level of interest. The estimated range for the L&TLF is \$3.50 - \$4.50/Mcf. Please note that the actual L&TLF may be higher or lower than such estimated range and that PGW makes no representation or warranty of any kind whatsoever as to the L&TLF that will be applicable under this project.

advanceLNG Project Target Market



CONTRACT TERM

Minimum of 5 years with preference for longer term interest of 10 or more years.

OPEN SEASON PROCESS

The (non-binding) Request Sheet may be downloaded at the link below.

www.pgworks.com

LIMITATIONS AND RESERVATIONS

This process is not intended as and shall not be deemed an offer for contract and no obligation on the part of PGW, either to complete the project or sell LNG to any requester, will arise unless and until a definitive agreement (using PGW's form of contract) is executed by the parties. This non-binding LNG supply purchase solicitation and the process it describes are proprietary to PGW and are for the sole and exclusive benefit of PGW. No other party, including any respondent to this non-binding LNG supply purchase solicitation, is intended to be granted any rights hereunder.

CONTACT US

Interested parties should contact the project team at:

PGW.LNG@pgworks.com

to address any questions they might have or obtain additional information about the LNG solicitation.

www.pgworks.com



advanceLNG Project

PGW WACOG and SSC HISTORY

Month	LNG Storage	Sales Service Charge (SSC)
January, 2011	6.7895	1.2692
February, 2011	6.7797	1.2692
March, 2011	6.6435	1.2526
April, 2011	6.4648	1.2526
May, 2011	6.3320	1.2526
June, 2011	6.3393	1.1834
July, 2011	6.3339	1.1834
August, 2011	6.3260	1.1834
September, 2011	6.3203	1.2076
October, 2011	6.2542	1.2076
November, 2011	6.0961	1.2076
December, 2011	5.8762	1.2229
January, 2012	5.7169	1.2229
February, 2012	5.6161	1.2229
March, 2012	5.3927	1.1953
April, 2012	5.2843	1.1953
May, 2012	5.1606	1.1953
June, 2012	5.1065	1.2448
July, 2012	5.3136	1.2448
August, 2012	5.3136	1.2448
September, 2012	5.3136	1.2279
October, 2012	5.2145	1.2279
November, 2012	5.0692	1.2279
December, 2012	4.9854	1.4354
January, 2013	4.9410	1.4354
February, 2013	4.8666	1.4354
March, 2013	4.7901	1.5029
April, 2013	4.7617	1.5029
May, 2013	4.7439	1.5029
June, 2013	4.7416	1.0868
July, 2013	4.7403	1.0868
August, 2013	4.7403	1.0868

AVG

1.2568

Month	LNG Storage	Sales Service Charge (SSC)
September 2013	4.7061	1.3242
October 2013	4.6635	1.3242
November 2013	4.7370	1.3242
December 2013	4.6593	1.3242
January 2014	4.5850	1.3242
February 2014	4.5528	1.3242
March 2014	4.6250	1.0706
April 2014	4.7179	1.0706
May 2014	4.7202	1.0706
June 2014	4.7273	0.9822
July 2014	4.7236	0.9822
August 2014	4.7199	0.9822
September 2014	4.7234	1.2704
October 2014	4.7465	1.2704
November 2014	4.6889	1.2704
December 2014		1.4027
January 2015		1.4027
February 2015		1.4027
March 2015		
April 2015		
May 2015		
June 2015		
July 2015		
August 2015		
September 2015		
October 2015		
November 2015		
December 2015		
January 2016		
February 2016		
March 2016		
April 2016		

AVG

1.2291