



ENERGY INNOVATION SYMPOSIUM

May 7, 2026 ■ 8:30 a.m. - 4 p.m. ■ Temple University

Convening for a Clean Energy Future

PLEASE FILL OUT OUR EVENT SURVEY HERE



PURPOSE:

The PGW Energy Innovation Symposium convenes national experts for a public dialogue on Philadelphia's clean energy future.

Panels at this year's 3rd annual Symposium will explore complexities and opportunities across a range of topics, including how we energize our stadiums and arenas, decarbonize the hardest to electrify industries, learn from the latest geothermal case studies, and leverage our energy assets to drive regional economic growth.

Howard Giffis Student Center | 1755 N. 13th Street | Philadelphia, PA 19122

Agenda

8:30 a.m. - 9:30 a.m.

REGISTRATION & NETWORKING

9:30 a.m. - 10:30 a.m.

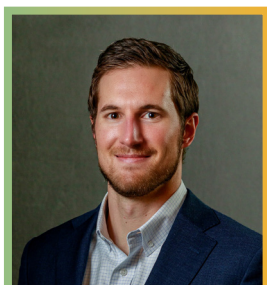
PANEL #1: DECARBONIZING THE HARD-TO-ABATES

Aviation, maritime, heavy-duty transportation, and industrial operations will be among the most challenging of sectors to decarbonize. They all represent core aspects of modern society and there are no single, obvious solutions for eliminating their emissions today. This panel will delve into the current mix of options and constraints, and examine practical strategies for reducing emissions across these sectors.

Panelists:



Moderator:
Rebecca Collins
Director of the Office of Sustainability, Temple University



Evan Campbell
Director of Business Development & Sustainability, Atlantic Aviation



Joseph Fedeyko
Business Development Manager, Clean Air Solutions (Johnson Matthey)



Kenneth Hill
Managing Director, BioCarbon Strategies



Hayden Roberts
Director of Business Development, TOTE Services

10:45 a.m. - 11:45 p.m.

PANEL #2: GEOTHERMAL CASE STUDIES

Geothermal energy is not a new technology. However, we are seeing more projects demonstrating broader applications here in the US, including early stages of utility-scale geothermal network projects. This panel includes experts, on the ground, leading a range of geothermal project types. They will help us explore where and how geothermal may best thrive, current limitations, and the role it could play forward.

Panelists:



Moderator:
Elizabeth Lankenau
Director of the Office of Sustainability, City of Philadelphia



Neal Babcock
Principal, Alderson Engineering



Andrew Feick
Associate Vice President for Sustainable Facilities Operations & Capital Planning, Swarthmore College



Chris Gray
CEO, EcoSmart Solution



Melissa Mauro
Principal Engineer, Gas Asset Management, National Grid

11:45 p.m. - 1:15 p.m.

LUNCH & NETWORKING



12:15 p.m. - 1:00 p.m.
Lunch Fireside Chat with Temple University President John Fry and PGW President & CEO Seth Shapiro



1:15 p.m. - 2:15 p.m.

PANEL #3: ENERGY AS AN ECONOMIC ENGINE

Pennsylvania has incredible energy assets. As just one example, PA is the largest electricity generator in the PJM territory, exporting roughly a quarter of its electric generation. These strengths can help ensure affordable energy for our residents and businesses, and drive overall economic development. It's not clear whether we are best leveraging these assets to their greatest potential. This panel convenes perspectives from energy providers, project developers, and private industry to examine our current landscape, the factors that most drive business attraction and job creation, and how the public and private sectors can collaborate in propelling regional economic growth.

Panelists:



Moderator:
Chris Franklin
Chairman & CEO, Essential Utilities, Inc.



Aron Patrick
Corporation Vice President, Research and Development, PPL Corporation



Roberto Perez
CEO, HRP Group



Holly Schroeder
Vice President, External Affairs, DrinkPAK

2:30 p.m. - 3:30 p.m.

PANEL #4: ENERGIZING OUR STADIUMS & ARENAS

Our stadiums and arenas are where Philadelphians across all walks of life come together as a community to root, cheer, and sometimes mourn. They've hosted some of our most exciting moments, which we've shared with friends and family across generations. Many of us have spent countless hours there, though few likely think about the massive facilities themselves. They are engineering feats, involving substantial infrastructure and energy demands. These projects and major renovations only come along every so often and have the potential for outsized impacts. This panel will explore the latest trends in energizing these facilities, and the roles they can play in driving the next generation of energy solutions and economic development for the overall City.

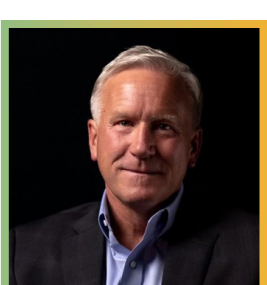
Panelists:



Moderator:
Leigh Whitaker
Vice President, Government & Community Affairs, University of Pennsylvania



Ryan Hemenway
Senior Director, Operations, Comcast Spectacor



Scott Jenkins
General Manager, ABM Industries



Mike Richter
President, Brightcore Energy



Norman Vosschulte
Vice President, Fan Experience and Sustainability, Philadelphia Eagles

SPONSORED BY:

Premium Sponsors



Supporting Sponsor



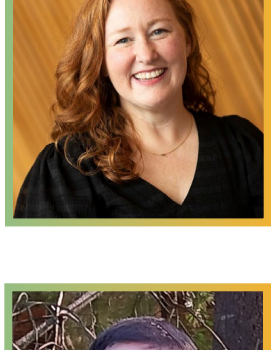
Co-Sponsor



PANEL #1: DECARBONIZING THE HARD-TO-ABATES



Evan Campbell is a Director of Business Development & Sustainability at Atlantic Aviation, a leading aviation infrastructure company with operations across more than 100 airports throughout North America. In this role, Evan is responsible for driving strategic growth initiatives across Atlantic's existing portfolio of airport operations as well as identifying and executing expansion into new markets. In parallel, he leads the development and execution of Atlantic's environmental sustainability strategy, with a focus on delivering pragmatic, impactful solutions across the company's portfolio. His responsibilities include advancing emissions reduction efforts across relevant scopes, aligning sustainability initiatives with the needs of host communities and customers, and managing board-level reporting on emissions tracking and performance. Evan earned an undergraduate degree in Finance and Accounting from Ohio University and is based in Denver, Colorado.



Rebecca Collins is the Director of Sustainability at Temple University. In this position, she advances sustainable academic initiatives and research, identifies opportunities to decarbonize campus operations, and develops policies that promote and support environmental best practices.

Prior to joining Temple University, Ms. Collins was the Corporate Initiatives Manager for Sustainability at the Southeastern Pennsylvania Transportation Authority (SEPTA) where she led systemwide electrification, renewable energy and decarbonization initiatives.



Joseph Fedeyko is currently the Business Development Manager for Johnson Matthey's Clean Air Solutions Team. He holds a Ph. D. in Chemical Engineering from the University of Delaware. Since joining Johnson Matthey in 2006, he has been the driving force for innovative technologies across catalysis, material development, process development, and system design, resulting in over 40 granted patent families and significant product launches. In addition, he has dedicated his time to serving in several leadership roles in both the Catalysis Club of Philadelphia and the North-East Corridor Zeolite Association. His current role coordinates product development, engineering, sales and business financing for existing stationary emission markets and the development of new market opportunities to support decarbonization and the energy transition.



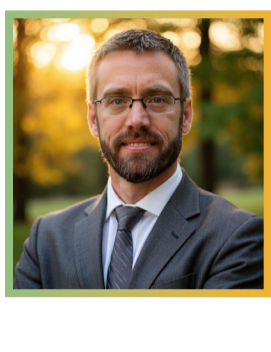
Kenneth Hill is a Finance and Strategy Consultant with project finance, business, and project development expertise working with companies in renewable fuels (SAF, Renewable Diesel, 2G ethanol, ammonia, methanol, etc.), biochemicals, carbon capture, and sustainable hydrogen. Kenneth operates a global consultancy, serving clients in the Americas, Asia, and Europe where he advises boards of directors, investment firms, and project developers. He previously served as Global Business Director for Cellulosic Ethanol/Enzymes at DuPont, Chief Commercial Officer for GranBio Technologies, and as a Senior Consultant in the U.S. Department of Energy's Loan Programs Office, vetting and financing projects in the advanced fuels, renewable chemicals/polymers, and biomaterials industries. Kenneth has a bachelor's degree in Chemical Engineering from Mississippi State University and a Masters in Global Management (MGM) from the Thunderbird School of Global Management. He currently resides in Wilmington, Delaware USA and Amsterdam, Netherlands.



Hayden Roberts serves as Director of Business Development for TOTE Services. The company is a recognized leader in deploying LNG as a marine fuel, leading the design, construction, and operation of the world's first LNG-powered containerships and associated bunkering infrastructure, and safely executing hundreds of LNG fuelling operations as a practical contribution to maritime decarbonization. Roberts leads strategic initiatives across vessel construction, ship management, and vessel ownership solutions, helping expand the company's footprint while delivering safe, reliable, and commercially disciplined outcomes for complex maritime challenges. He began his career with TOTE Services in 2016 as a shipboard deck officer on vessels trading between the U.S. East Coast and Europe, later advancing to Fleet Port Captain, where he led vessel operations and regulatory compliance. His seagoing experience, combined with a commercially focused leadership approach, ensures projects are technically sound and consistently delivered on cost and schedule.

He holds a Master of Business Administration from the University of Florida Warrington College of Business and a Bachelor of Science in Marine Transportation from the U.S. Merchant Marine Academy. He also holds a U.S. Coast Guard license as Master of Unlimited Tonnage and a Masters in Maritime Law from Florida State University. Hayden Roberts lives in Jacksonville with his wife and daughter.

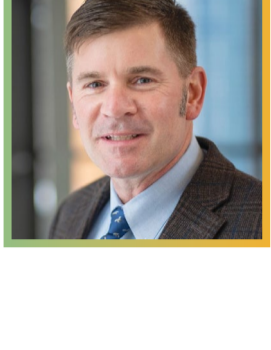
PANEL #2: GEOTHERMAL CASE STUDIES



Neal Babcock is a Certified GeoExchange Designer (CGD), a Professional Engineer (PE, in 18 states), a LEED AP, and an industry expert in geothermal water-source heat pump systems and has provided geothermal well field system design for over 21,000 Tons and 6,600 wells, encompassing over 6.8 million square feet of building space (and counting). He has been involved in the design of two of the largest closed-loop, distributed condenser-water geothermal systems, each with a capacity of over 3,000 tons.

Neal is a principal at Alderson Engineering. Alderson Engineering has been designing geothermal systems since its inception in 1990.

Neal serves as an Association of Energy Engineers (AEE) Mentor and has served as a Council on Tall Buildings and Urban Habitat (CTBUH) Adaptive Reuse/Retrofit Committee Member and Building System Awards Juror.



Andrew Feick Andy has spent the last 25 years as a higher education facilities management professional after serving as an officer in the US Army Corps of Engineers. His experience includes service to small, private colleges and large, urban, public, research institutions, including Temple University, Babson College and Olin College of Engineering. In Andy's current role, he is responsible for leading Swarthmore College's capital program and facilities operations in a manner that achieves the college's 2035 carbon neutrality goals, including a campus-wide heating and cooling infrastructure replacement and a new, net zero energy dining facility and a comprehensive accumulated deferred maintenance action plan. Andy's team is coordinating a comprehensive campus planning effort that includes strategic plan implementation support, campus master planning, energy planning, athletics, wellness & recreation planning and deferred maintenance campus renewal, to name a few.



Christopher (Chris) Gray is the CEO of EcoSmart Solution (ESS). ESS is a green energy services provider of scalable, sustainable infrastructure for new real estate developments and retrofit solutions for existing buildings. For developers of new construction, ESS designs and delivers an innovative geothermal infrastructure combined with a comprehensive suite of distributed energy resources. For existing assets ESS delivers turnkey, bespoke carbon and energy reduction retrofits with benefits to owners, landlords, and tenants.

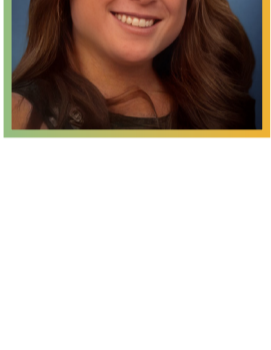
Chris brings an extensive background in energy and engineering. Before leading ESS, he served as the CTO of the company. Prior to that he stood up RENU Communities, which developed a process and team to deliver decarbonization retrofits. He spent over 15 years working within energy giant Southern Company in various roles and operating companies including: research and development, sales, and new business development.

Chris is highly active in the Energy industry and is an ASHRAE Fellow. Chris holds multiple engineering degrees including a PhD in Civil Engineering and is a registered PE in multiple states along with a licensed mechanical contractor.



Liz Lankenau has more than 25 years of public and private sector experience, beginning at the Philadelphia Historical Commission preparing nominations for the local register of historic places. As a consultant, she worked with PennDOT on the I-95 reconstruction project and with Philadelphia's collar counties on land use planning. Upon returning to City of Philadelphia at the Office of Transportation & Infrastructure Systems, Liz facilitated strategic relationship development across departments and organizations external to municipal government. She has served as the Director of the Office of Sustainability since 2023.

A lifelong Philadelphian, Liz graduated from Central High School (248). She received a Bachelor of Arts in Sociology and Urban Studies from the University of Pittsburgh and a Master of Science in Historic Preservation from the University of Pennsylvania. Liz maintains accreditation with the American Institute of Certified Planners.



Melissa Mauro (Spinelli), P.E. has been with National Grid for 12 years, specializing in gas quality, odorization, and renewable energy. She currently serves in the Asset Engineering department, where she focuses on decarbonizing the natural gas system through the implementation of utility thermal energy resources, acting as National Grid's technical team lead for the Company's proposed projects. Under New York State's Utility Thermal Energy Network and Jobs Act (UTENJA), enacted in 2022, Melissa leads three proposed thermal energy network pilot projects across National Grid's service territory.

Her additional areas of expertise include biomethane pipeline injection, gas quality management, and hydrogen blending into the natural gas system. Melissa has made significant industry contributions, including serving as a chapter colead for the 2017 revision of the American Gas Association (AGA) Odorization Manual, and as a key contributor to the NGA Interconnect Guide for Renewable Natural Gas in New York State (finalized in August 2019 and subsequently revised), as well as the 2021 revision of AGA Report No. 4A on Natural Gas Contract Measurement and Quality Gas. She was also published in the September 2021 biomethane issue of AIChE's Chemical Engineering Process magazine.

Melissa earned her bachelor's degree in chemical engineering from Manhattan College in Riverdale, New York, in 2010, and her master's degree in chemical engineering in 2011.

TEMPLE UNIVERSITY PRESIDENT JOHN FRY



John Fry took office as Temple University's 15th president on Nov. 1, 2024. Prior to that, from 2010 to 2024, he served as president of Drexel University where he established a reputation as both a civic leader in Philadelphia and national leader in higher education.

At Drexel, President Fry elevated the university's global presence through academic and research partnerships, major NIH and NSF research programs, as well as hubs for innovation and collaboration. Under his leadership, Drexel set a national example for the successful execution of public-private partnerships and became a powerful force for economic development in the Greater Philadelphia region. He championed major neighborhood revitalization initiatives, including the creation of a multifaceted university extension center in Mantua - the Domsie Center for Neighborhood Partnerships - extensive economic development efforts, and significant partnerships to support local neighborhood public schools.

In 2019, Drexel and Tower Health acquired St. Christopher's Hospital for Children, thereby ensuring that St. Christopher's will remain a source of health and healing, medical education and research, and jobs and economic benefit for its North Philadelphia neighborhood and the broader region. President Fry spurred the creation of Schuylkill Yards, a \$3.5 billion mixed-use development on Drexel's campus, and he also oversaw historic mergers with Salus University and the Academy of Natural Sciences.

Before joining Drexel, he served as president of Franklin & Marshall College from 2002 to 2010 and executive vice president of the University of Pennsylvania from 1995 to 2002. A native of Brooklyn, N.Y., Fry graduated from Lafayette College and earned a master's degree in business administration from the New York University Stern School of Business.

PANEL #3: ENERGY AS AN ECONOMIC ENGINE



Christopher Franklin is the Chairman and Chief Executive Officer of Essential Utilities, Inc. (NYSE: WTRG), one of the largest publicly traded water, wastewater and natural gas providers in the U.S., serving approximately 5.5 million people across nine states.

Chris puts customers at the center of Essential's mission, championing a values-driven approach to delivering safe, reliable, and sustainable utility services. He led the \$4.2 billion acquisition of Pittsburgh-based Peoples Natural Gas, bringing together Aqua and Peoples to form Essential Utilities in 2020. This transformation positioned Essential as a fully integrated utility, significantly expanding its footprint and operational capabilities while reinforcing its long-term growth strategy.

Since becoming Chairman and CEO, just over a decade ago, Chris has led Essential through a period of remarkable growth. Under his leadership, Essential's market capitalization more than tripled, and nearly \$8 billion has been invested in water and gas infrastructure. He has also overseen more than 70 acquisitions, nearly doubling the company's customer base and positioning Essential as a national leader in regulated utility consolidation and modernization.

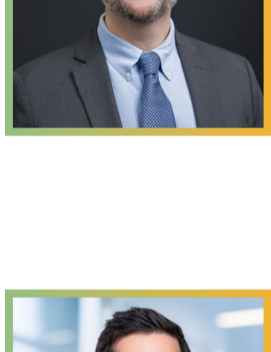
In October of 2025, Essential Utilities announced that it would merge with American Water (NYSE: AWK). Chris led the negotiations on the transaction and will hold a formal role in the integration of the two companies as executive vice chairman of the combined company's board of directors.

The company has been named one of America's Most Responsible Companies by Newsweek for four consecutive years, one of America's Climate Leaders by USA Today for two consecutive years. Essential has also been honored four times by the Forum of Executive Women as a Champion of Board Diversity and was named among the top 50 civic-minded companies in Philadelphia by national nonprofit Points of Light in 2025.

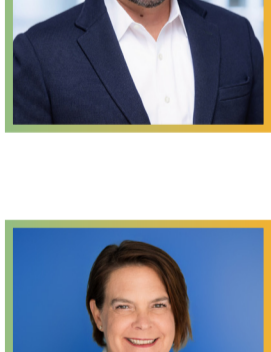
As a veteran of the company for more than three decades, Chris previously served as president and COO, and held leadership roles across public affairs, customer service, and operations. He has been named EY's Entrepreneur of the Year, one of the Philadelphia Business Journal's Most Admired CEOs, CEO of the Year by the Main Line Chamber of Commerce and was listed on City & State Pennsylvania's 2025 Power 100 and 2023 Energy and Environment Power 100 lists.

Chris serves as chair of the board for the Chamber of Commerce for Greater Philadelphia and is a director and past chairman of the National Association of Water Companies. He serves as lead independent director at CenterPoint Energy (NYSE: CNP) In addition to CenterPoint, Chris serves on the board of Director of Blue Cross and the PNC Bank Advisory Board. He also serves on the board of the Franklin Institute and the University of Pennsylvania's Board of Trustees.

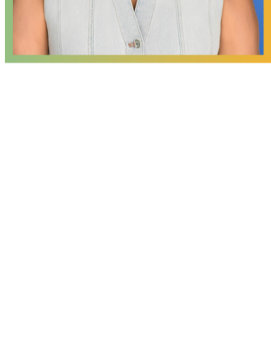
Chris earned his bachelor's degree from West Chester University and his MBA from Villanova University.



Aron Patrick is the PPL Corporation Vice President of Research and Development responsible for managing an enterprise-wide R&D strategy across all operating companies including generation, electric and gas delivery, and behind-the-meter opportunities. Aron leads all partnerships with external research organizations, including national laboratories and universities. Aron coordinates enterprise participation in Energy Impact Partners (EIP) and The Westly Group venture funds. In addition, Aron manages PPL's engagement with the Electric Power Research Institute (EPRI) on a growing array of research initiatives. Aron is a former assistant director for the Kentucky Energy and Environment Cabinet, where he worked with industry, national research laboratories and universities on projects involving energy policy and future generation technologies. He is also a former intelligence analyst working on national security problems for the United States Government. He joined LG&E and KU as a lead analyst in 2016 and has served as manager, director, and now VP of R&D since 2025.



Roberto Perez serves as Chief Executive Officer of HRP Group and is a founding partner of the company. As CEO, Roberto oversees all investment activities and is responsible for setting HRP's strategic vision and company culture. Under his leadership, the company has become one of the largest vertically integrated developers of Brownfield projects in the country. Roberto maintains an active role in deal sourcing, stakeholder engagement, and relationship building and has also spearheaded the development of The HRP Way to highlight the firm's holistic approach to sustainable value creation. Prior to co-founding HRP Group, Roberto worked at Hilco Real Estate and U.S. Equities Realty. Roberto was born in Puerto Rico and moved to the United States as a young teenager. He is a graduate of Lake Forest College.



Holly Schroeder is Vice President of Organizational Strategy for DrinkPAK, a leading contract beverage manufacturer headquartered in Santa Clarita, CA. In this role, Holly guides the company's strategies for organizational growth, starting with site selection of new facilities and associated external relations. She also leads internal organizational alignment efforts to ensure this fast-growing company is appropriately prepared to scale.

Prior to moving to DrinkPAK, Holly was President and CEO of the Santa Clarita Valley Economic Development Corporation. There she worked with the dynamic SCVEDC Board of Directors and oversaw all operations of the SCVEDC. SCVEDC provides an integrated approach to attracting, retaining and expanding a diversity of business and industry in the Santa Clarita Valley.

Holly is an experienced CEO and board member with over 30 years of experience helping organizations optimize their operations. She serves on the Board of Directors of Logix Federal Credit Union, the largest credit union in Los Angeles County. She also serves on the Board of Directors for Henry Mayo Newhall Hospital in Santa Clarita, CA.

Holly has extensive experience in the non-profit, public and private sectors. Prior to joining the SCVEDC in September 2013, she served for 8 years as Executive Officer of the Los Angeles Ventura Chapter of the Building Industry Association (BIA/LAV). Before that, she worked for nearly a decade at the Oregon Department of Environmental Quality (DEQ). Prior to working at DEQ, Schroeder worked in the private sector for Waste Management Inc.

Born and raised in Ohio, Holly has a bachelor's degree from St. Olaf College in Minnesota, and a master's degree from the University of Oregon.

PANEL #4: ENERGIZING OUR STADIUMS & ARENAS



Ryan Hemenway With 25 years of sports and entertainment industry experience, Ryan and his team oversee the operations, conversions, cleaning, and sustainability of 200+ annual events at the Xfinity Mobile Arena, home of the Philadelphia Flyers and 76ers.



Scott Jenkins has extensive experience in developing, opening, and operating sports venues including Mercedes-Benz Stadium in Atlanta, Safeco Field in Seattle, Lincoln Financial Field in Philadelphia, Miller Park in Milwaukee, and CPKC Stadium in Kansas City. Jenkins is a pioneer in the environmental movement in sports and co-founder of the Green Sports Alliance where he served as Board Chair for the first 12 years of the organization. He was honored with the 2013 Natural Resources Defense Council Game Changer Award, the 2012 NW Energy Coalition Conservation Eagle Award, and the Green Sports Alliance Legacy Award in 2023. Jenkins graduated from the University of Wisconsin with a bachelor's degree in construction administration and the University of Washington's Executive MBA program.



Mike Richter is President of Brightcore Energy, a leading provider of clean energy solutions for commercial and institutional buildings. A former New York Rangers goaltender, he enjoyed a 15-year NHL career, earning three All-Star selections, a Stanley Cup, World Cup Gold, and an Olympic Silver Medal before his 2008 induction into the U.S. Hockey Hall of Fame. After retiring, Mike earned a degree from Yale University in Ethics, Politics, and Economics and launched a sustainability-focused career, co-founding Environmental Capital Partners and later Healthy Planet Partners. Since 2016, he has led Brightcore's expansion in geothermal and advanced clean energy technologies.



Norman Vosschulte Originally from Berlin, Germany, Norman Vosschulte's life has been shaped by a global journey that spans Africa, Iraq, Spain, and the United States. After completing his Abitur in Germany and studying Biology and Physical Science, Norman followed his passion for storytelling and moved to New York City in 1996 to study theatre at the Herbert Berghof Institute for Fine Theatre Arts and Drama.

Norman's career is as dynamic as his background, from hospitality and non-profit work to leadership roles in the sports and entertainment industries. With over 25 years of experience in customer and client relations, he has mastered the art of creating meaningful, memorable guest experiences.

For more than two decades, Norman has led teams and training programs with organizations known for excellence, including The Walt Disney Company and now the Philadelphia Eagles.

In 2014, Norman became the Eagles' official GO GREEN spokesperson, guiding the team's award-winning sustainability initiatives. Lincoln Financial Field became the oldest NFL stadium to achieve LEED Platinum Operations and Management certification and the first sports team worldwide to reach ISO 20121 certification.

He reimagined the program with the rallying call "Innovate. Sustain.", building the ECO (Engagement, Communication, Operations) Committee to engage employees at every level. The Eagles have since led the way in offsetting team travel carbon emissions by investing in nature-based projects - from reforesting the Neshaminy Eagles Forest and installing carbon groves in Vieques, to supporting bird tagging in the *Stellwagen Bank National Marine Sanctuary*.

Most recently, Lincoln Financial Field became the first stadium in the world to feature an onsite hydrogen production and fueling station, a testament to Norman's vision of innovation powered by purpose.